



5599 Highway 31 West
Portland, TN 37148
(615)325-2774

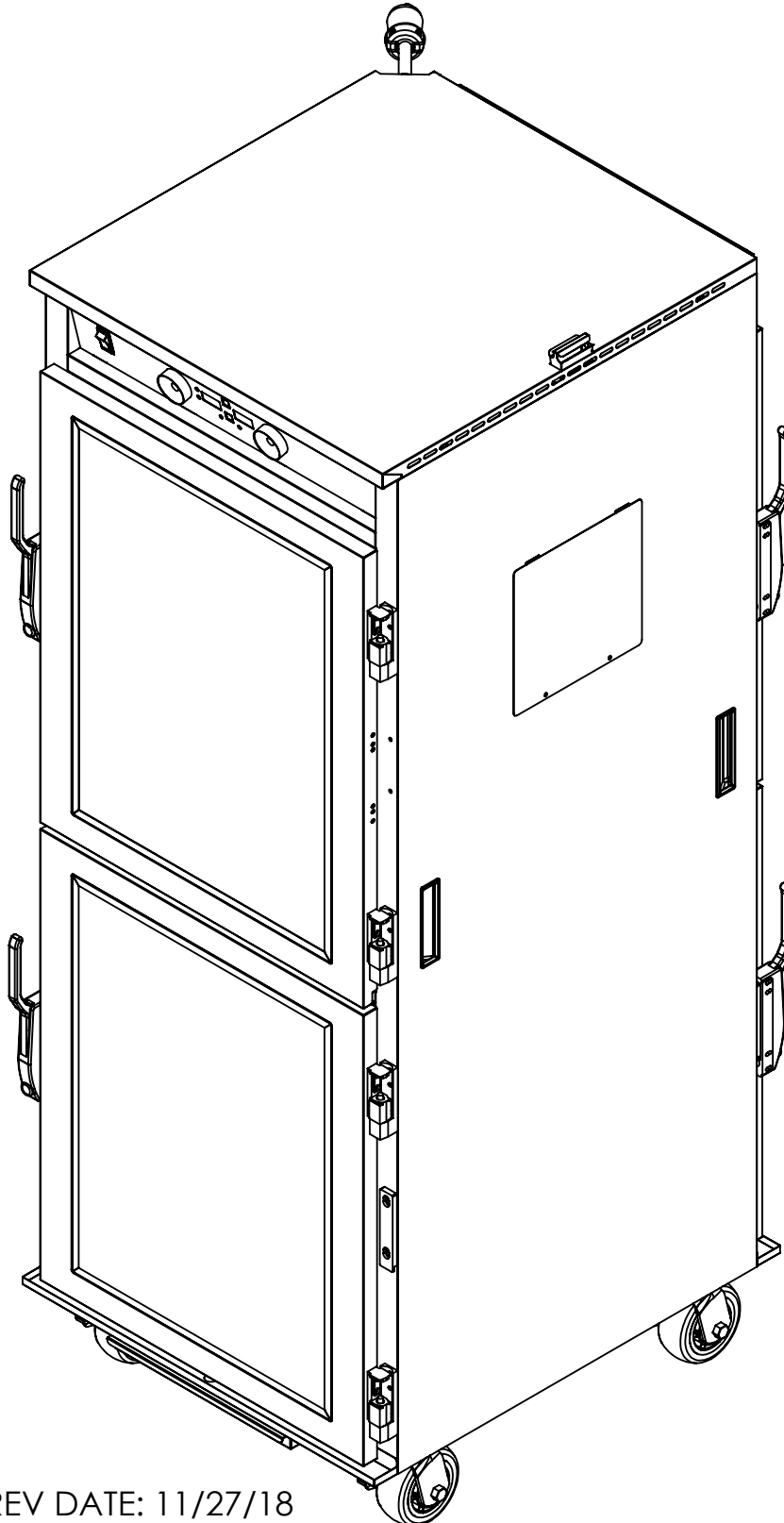
PHTT-12P-KFC

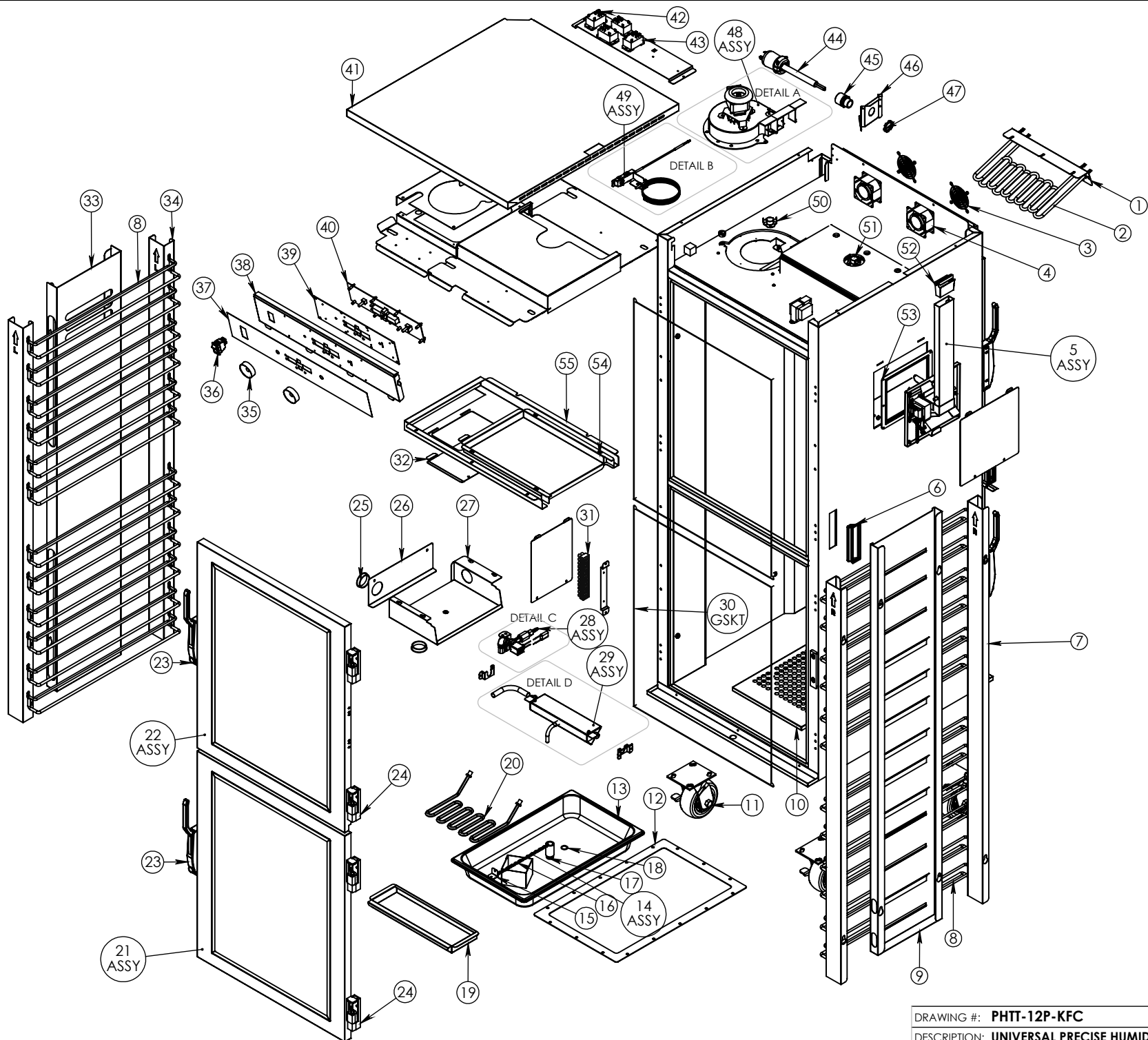
Pg.1TITLE PAGE

Pg.3DETAIL PAGE

Pg.2PHTT-12P-KFC

Pg.4PHTT-12P-KFC BOM





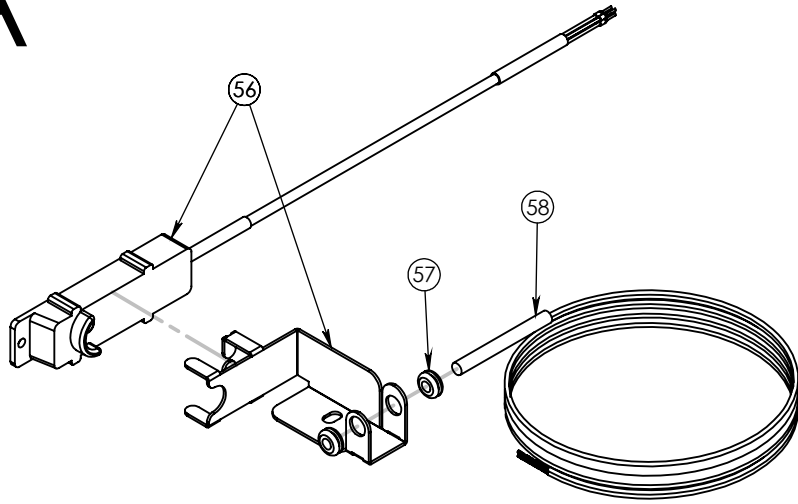
DRAWING #: PHTT-12P-KFC

DESCRIPTION: UNIVERSAL PRECISE HUMIDITY PASSTHRU

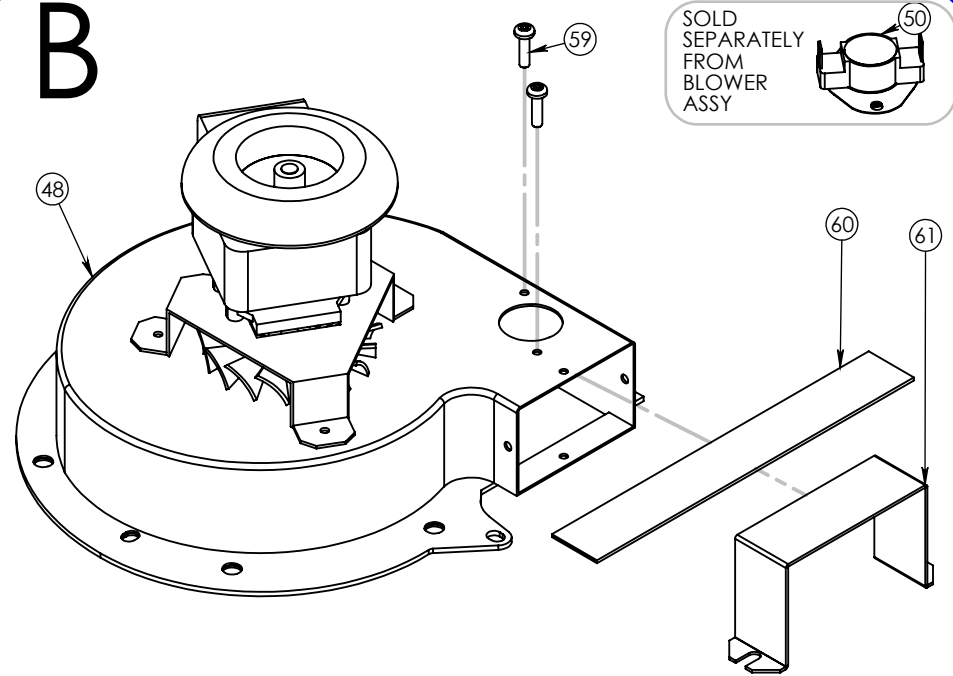
DRAWN BY: JR

LAST SAVED BY: ashton92

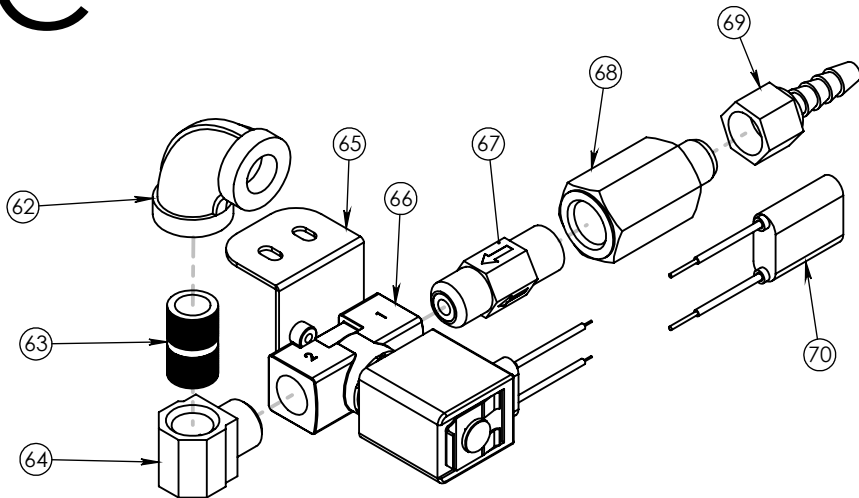
A



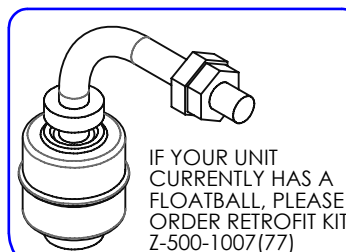
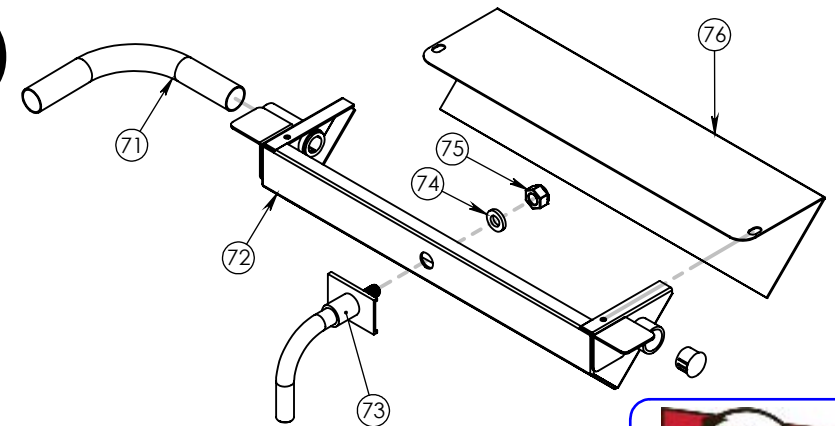
B



C



D

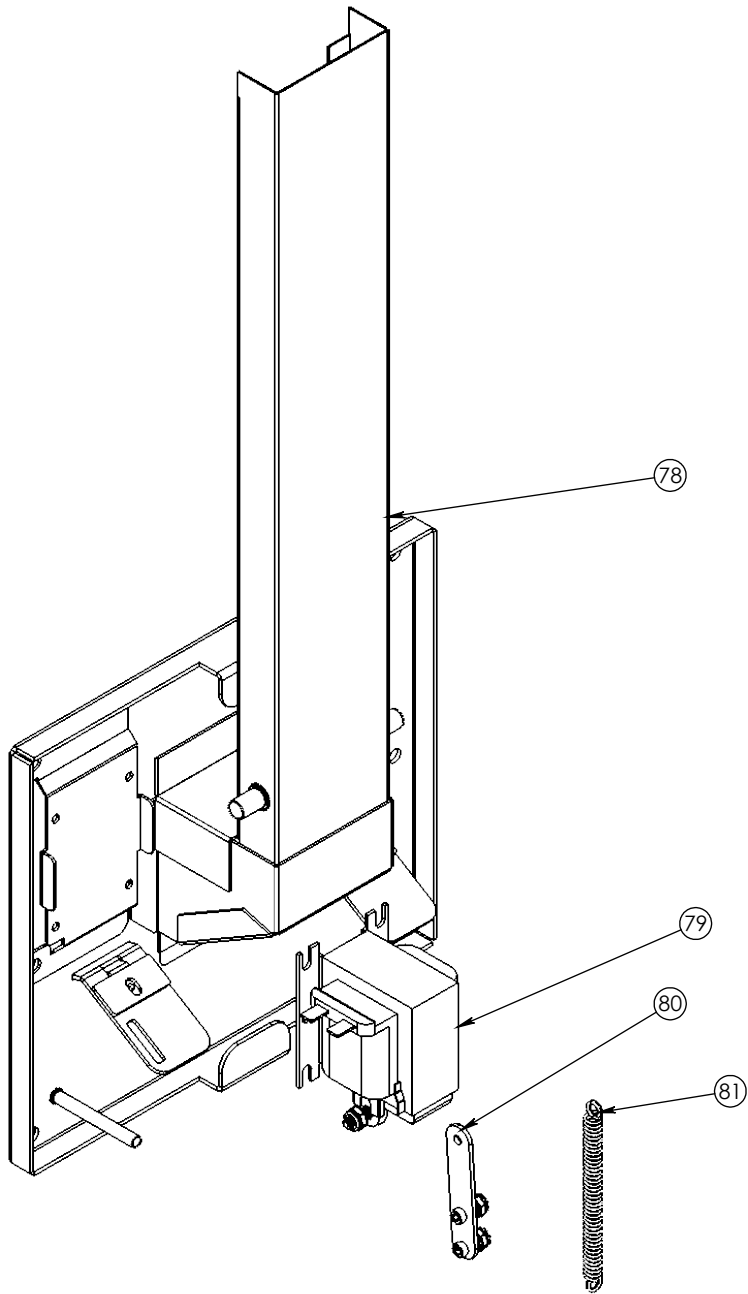


IF YOUR UNIT CURRENTLY HAS A FLOATBALL, PLEASE ORDER RETROFIT KIT Z-500-1007(77)



DRAWING #: **PHTT-12P-KFC**
 DESCRIPTION: **UNIVERSAL PRECISE HUMIDITY PASSTHRU**
 DRAWN BY: JR LAST SAVED BY: ashton92

78	1	Z-600-3588	PHTT-12P-KFC VENT DUCT ASSY
79	1	SOLENOID-PHTT	SOLENOID-CONTIOUS DUTY
80	1	58456	PHTT-12P VENT PULL ARM
81	1	SPNG EXTEN	EXT SPRING 1.75"L .029 WIRE



ITEM NO.	QTY.	PART NO.	DESCRIPTION
1	1	54606	DUAL ELEMENT MOUNTING PLATE
2	2	EL1500-120-HT SCREW LUG	ELEMENT 1500 WATT 120 VOLT
3	2	GRD FAN	FAN GUARD
4	4	FAN PHTT 115	115V FAN.80 X 80 X 38MM
5	1	Z-800-1973 (INCLUDES 78-81)	PHTT-12P-KFC VENT SYSTEM ASSY
6	4	PL FLSH BLK ABS	PULL BLACK ABS 5.01
7	2	55511	PHTT-12-KFC UPRIGHT 3 FLIP DR RIGHT
8	24	SLD-PHTT245-SS	TRAY SLIDES PHTT245 SS ELECTRO-POLI
9	1	59728	PHTT-12P-KFC SUPPLY TUNNEL
10	1	55389	PHTT KFC WATER PAN COVER
11	4	CSTR 52-SB-PPF	CASTER 5" SWIVEL BRAKE EZ ROLL POLY
12	1	GSKT PHTT	SILICONE SPONGE 1/16" D/C W/PSA
13	1	Z-600-2636	FULL SIZE SS PAN, 2-1/2" DEEP
14	1	Z-600-3979 (INCLUDES 15-18)	MACHINED PPS PIPE ASSY
15	1	55536	PHTT PIPE CLAMP BRKT
16	1	11119	SINGLE JACK CHAIN 8"-9" 13 LINKS
17	1	PIPE-DRAIN (MANDATORY TO ALSO ORDER 18)	PIPE STAND 1"DIA X 2" L - PPS
18	1	O-RING-OR018	O-RING 3/4"ID X 1/16" THK SILICONE
19	2	56331	PHTT-KFC DRIP PAN
20	1	EL2000-120PHTT-2.5	ELEMENT 2000W 120V FOR 2.5" PAN
21	2	Z-301-2683 (INCLUDES 23-24)	PHTT-12-KFC SC-LO/MAG GLS BTM RH-FR
22	2	Z-301-2962 (INCLUDES 23-24)	PHTT-12-KFC SC-LO/MAG GLS TOP RH-FR
23	4	LTH MAG OFFSET HNDL	CHROME MAGNETIC LATCH,OFFSET HANDLE
24	8	HNG-LIFT-OFF-215	HINGE LIFT-OFF SELF CLOSING 1-3/16
25	2	PLG 1 3-4	PLUG HOLE 1-3/4" HOLE, BLK
26	1	54955	PHTT SIDE ACCESS PANEL
27	1	57543	PHTT KFC ELECTRICAL BOX COVER
28	1	Z-600-3347 (INCLUDES 62-70)	PHTT WATER AUTO FILL ASSY
29	1	Z-800-2108 (INCLUDES 71-76)	PHTT-CONDUCTIVE PROBE HOUSING ASSY
*30	4	GASKET (SEE BOTTOM FOR DETAILS)	SILICONE DOOR GASKET D 24.00X29.875
*30(A)	4	GSKT MAG2531	MAG. DOOR GASKET 25.25 X 30.50
*30(B)	4	GSKT-D-24X29-875	SILICONE GASKET D-24.00X29.875
31	1	TRM BLK PHTT	EURO STRIP TERM. BLOCK, 12 POSITION
32	1	57659	PHTT BAFFLE ACCESS PLATE
33	1	59655	PHTT-12-KFC RETURN TUNNEL
34	2	55510	PHTT-12-KFC UPRIGHT 3 FLIP DR LEFT
35	4	KNB PHTT	KNOB, DIMPLE TURN
36	1	SWH RCK E1	SWITCH NON-LT ON/OFF ROCKER BLK
37	2	CNTRL PNL PHT	OVERLAY FOR CLYMA TE IQ (PHTT)
38	1	67601	PHTT-KFC CONTROL PANEL IEC
39	2	80030	CNTRL PANEL PRECISE HUMITEMP
40	2	CNTRL BRD-PHTT 12	CONTROLLER FOR PHTT W / HUMID VENT

41	1	57955	PHTT-12P-KFC OUTSIDE TOP 3 POS
42	4	RLY 30AM P DPDT	30AMP PANEL MOUNT RELAY,2 POLE 120V
43	4	RLY 30AM P DPDT-FIN	30AMP PANEL MOUNT RELAY,2 POLE 120V
44	1	CRDSET30-115 TWIST LOCK	CORD 12' 115 VOLT L5-30P 10/3
45	1	CRD GRIP .625X.75 -.75	CORD GRIP 5/8-IN .625 - .750 CONN
46	1	56432	PHTT-12 CORD BRKT 30 AMP
47	1	CRD GRIP LOCKNUT 3-4	CORD GRIP LOCKNUT STEEL 3-4
48	1	Z-500-1009 (INCLUDES 60-61)	BLWR-120-60 WITH SNAP DISC 150-130
49	1	Z-800-2042 (INCLUDES 56-58)	PHTT SENSOR MOUNT PLATE ASSY
50	1	SNAP DISC150-130	COOL DOWN SWITCH NO F150
51	1	SNAP DISC210-250	HI LIMIT SWITCH NC L250
52	1	58049	PHTT HUMIT EVAC CHIMNEY
53	1	59297	PHTT VENT PLATE SUPPORT
54	1	59727	PHTT-12P-KFC BTM HEAT COVER LARGE
55	1	59731	PHTT-12P-KFC RETURN BLOWER BAFFLE
56	1	Z-600-3850	PHTT SENSOR NO T PROBE
57	2	GRMT-HT-3-16	SILCONE GROMMET 3/16ID X 7/16OD
58	1	THERMISTOR-PROBE	THERMISTOR-PROBE
59	2	S8-32X10 CTS	SCRW 8-32x5/8 PH CUT 410
60	1	GSKT 1MCS	GSKT 1MCS @ 7"
61	1	59672	BAY BLOWER END SEAL CAP
62	1	ELB-90-SS-TBE-1-4	ELBOW S/S 1/4" PIPE-90 DEGREE-TBE
63	1	PIPE-NIPPLE-BRS-250	BRASS PIPE NIPPLE,1/4" NPT,FULL THR
64	1	ELB-250-BRS	ELBOW BRASS,1/4"NPT MALE-FEMALE
65	1	57628	PHTT AUTO FILL MOUNTING BRKT
66	1	VLVSLND 2-WAY PHTT 120V	2 WAY WATER SOLENOID VALVE, 120V
67	1	FILTER-PIPE	FILTER, IN LINE PIPE STYLE 1/4" NPT
68	1	VLV BALL 250	MINI CHROME BALL VALVE 1/4" NPT
69	1	ADPTR BRASS FEM ALE 1-4	ADAPTER 1/4 BARB X 1/4 FIP, BRASS
70	1	CNTRL SURGE SUPPRESSOR	SURGE SUPPRESSOR,TEMP CONTROLLER
71	1	SLV-ACRYLIC-WHITE-7-16 @ 12"	SLEEVING ACRYLIC 7/16 ID WHITE FAI
72	1	Z-600-3117	PHTT ELEMENT HOUSING
73	1	COND PROBE AT	CONDUCTIVE PROBE 2.125" ANTI-TWIST
74	1	W1-4SLSS	WASHER1/4 MED.SPLIT LK SS
75	1	N1-4-20 NEUN	NUT 1/4-20SS SELF LOCKING
76	1	53358	PHTT-12 ELEMENT MOUNTING COVER
77	1	Z-500-1007 (INCLUDES PARTS 73-75)	FLOAT BALL CONVERT S1-KFC0004
78	1	Z-600-3588	PHTT EVAC DUCT OUTSIDE COVER
79	1	SOLENOID-PHTT	SOLENOID-CONTIOUS DUTY
80	1	58456	PHTT-12P VENT PULL ARM
81	1	SPNG EXTEN	EXT SPRING 1.75"L .029 WIRE



*UNITS WITH A SERIAL NUMBER MATCHING OR PRECEDING 144087201 WILL RECEIVE 30(a) ALL SERIAL NUMBERS PROCEEDING 144087201 WILL RECEIVE 30(B)

IF YOU ARE UNABLE TO ACQUIRE A SERIAL NUMBER PLEASE CONTACT US FOR FURTHER ASSISTANCE IN IDENTIFYING AND PURCHASING A REPLACEMENT GASKET OR ANY OTHER QUESTIONS YOU MAY HAVE.
PHONE: (800)-222-4393

DRAWING #: **PHTT-12P-KFC**

DESCRIPTION:

DRAWN BY:

LAST SAVED BY: