



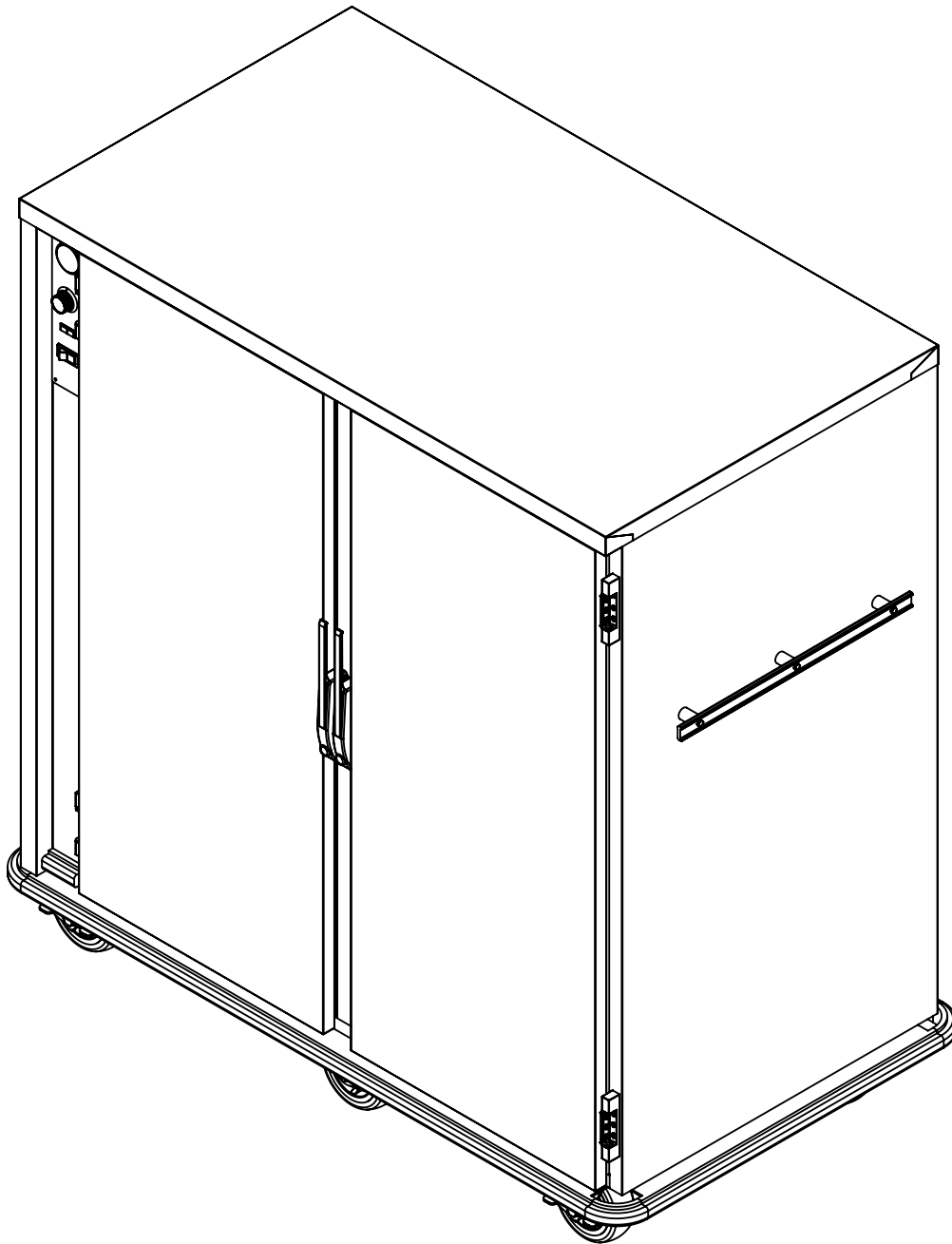
5599 Highway 31 West  
Portland, TN 37148  
(615) 325-2774

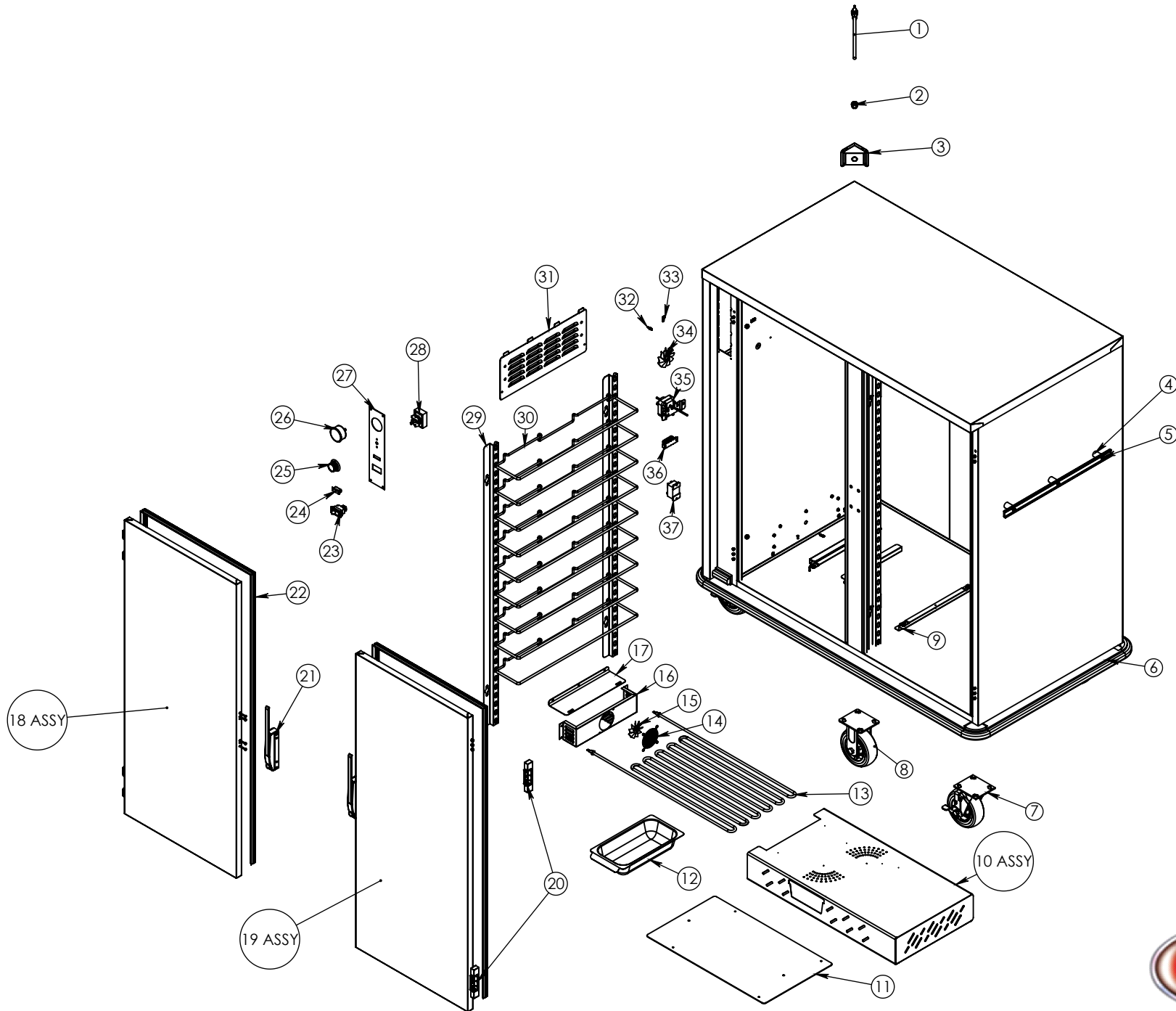
# UHS-20

Pg.1 . TITLE PAGE

Pg.3 . UHS-20 BOM

Pg.2 . UHS-20





DRAWING #: <b>UHS-20 DRAWING</b>	
DESCRIPTION: <b>UNIVERSAL SERVER</b>	
DRAWN BY: OH	LAST SAVED BY: ohooks

ITEM NO.	QTY.	PART NO.	DESCRIPTION
1	1	CRDSET10-115	CORD 12' 115V 5-15P 14GA 3WR 15AMP
2	1	BSH STRN 3	STRAIN RELIEF FOR 15 AMP CORD
3	1	69729	HUMI TRI-CORD BRCKET DD .672X .750
4	6	SPCR125X.330	HANDLE SPACERS FOR HDL 21 AND 12.
5	2	HDL-215-AL	HANDLE PUSH AL 21.5
6	1	Z-200-1103	UHS-20 BUMPER ASSEMBLY
7	2	CSTR 62-SB-PPF	CASTER 6" SWIVEL BRAKE EZ ROLL POLY
8	1	CSTR 62-R-PPF	CASTER 6" RIGID EZ ROLL POLY
9	1	50634	UHS-20 ELEMENT HOLDER BRKT
10	1	Z-600-1252(INCLUDES 12)	UHS-20 WATER PAN TUNNEL ASSEMBLY
11	1	50300	UHS-20 ALUM HTNG ELEMENT CVR
12	1	WATER-PAN-3RD-WHDL	WATER PAN 2.5" X6.75 X
13	1	EL1600-120HT-XL-28	ELEMENT 1600 WATT 120 VOLT 28" HT
14	1	GRD FAN	FAN GUARD
15	1	BLD FAN 2.5S	FAN BLADE 2.5" ALUMINUM
16	1	5345	HUMITEMP BLOWER HSING
17	1	4041	HUMITEMP BLOWER LID
18	1	Z-301-3909(INCLUDES 20-21)	UHS-20 DOOR ASSEMBLY EDG/MAG LH
19	1	Z-301-3908(INCLUDES 20-21)	UHS-20 DOOR ASSEMBLY EDG/MAG RH
20	4	HNG-214	DOOR HINGE EDGEMOUNT .875
21	1	LTH MAG	DOOR LATCH EDGEMOUNT CHROME MAGNTIC
22	2	GSKT-D-51X22-500	SILICONE DR GASKT D 51X22.5 3S
23	1	SWH RCK E1	SWITCH NON-LT ROCKER 125/250V 20AMP
24	1	LT PLT A-G	INDICATOR LIGHT AMBER GREEN 125V
25	1	KNB H6	KNOB WITH ARROW
26	1	T-METER H1	THERMOMETER 100-220
27	1	CNTRL-PNL-HUMI-TEMP-AL	ALUM PANEL FOR HUMI-TEMP
28	1	T-STAT H1	THERMOMSTAT HEAT CNTRL 90-190 36"
29	8	53194	UHS-20 UPRIGHT .750 OFFSET
30	40	SLD UHS245	TRAY SLIDE NICKEL PLATED UHS
31	1	53454	HUMITEMP LOUVER PANEL W/TABS
32	2	S8X8THUM	SCRW #8x.5TY.A SS T32-5020
33	4	CLP-AL1-4	CLAMP 1-4" ALUM
34	1	BLD FAN AL	FAN BLADE 3" ALUMINUM
35	1	Z-600-6151	MTRBY 120 92
36	1	TRM 4QC	TERMINAL BLOCK 4QC
37	1	RLY 30AMP DPDT	30AMP PANEL MOUNT RELAY,2 POLE 120V



DRAWING #: **UHS-20 DRAWING**

DESCRIPTION: **UNIVERSAL SERVER**

DRAWN BY: OH

LAST SAVED BY: ohooks