



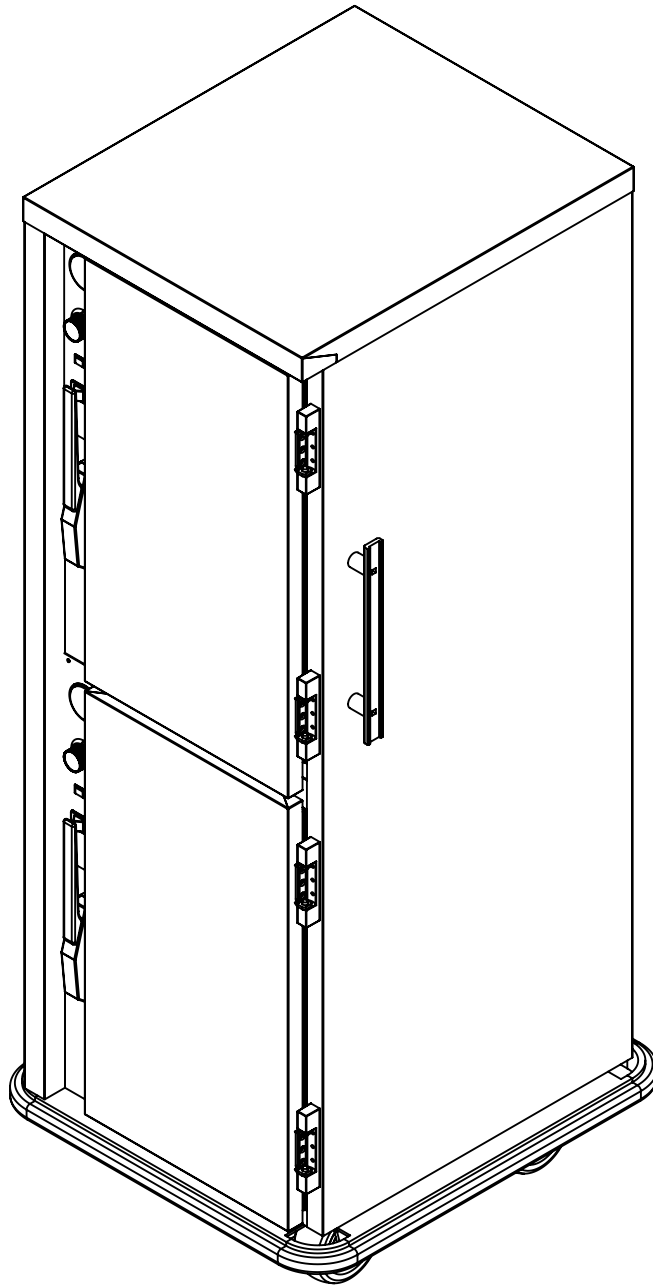
5599 Highway 31 West
Portland, TN 37148
(615)325-2774

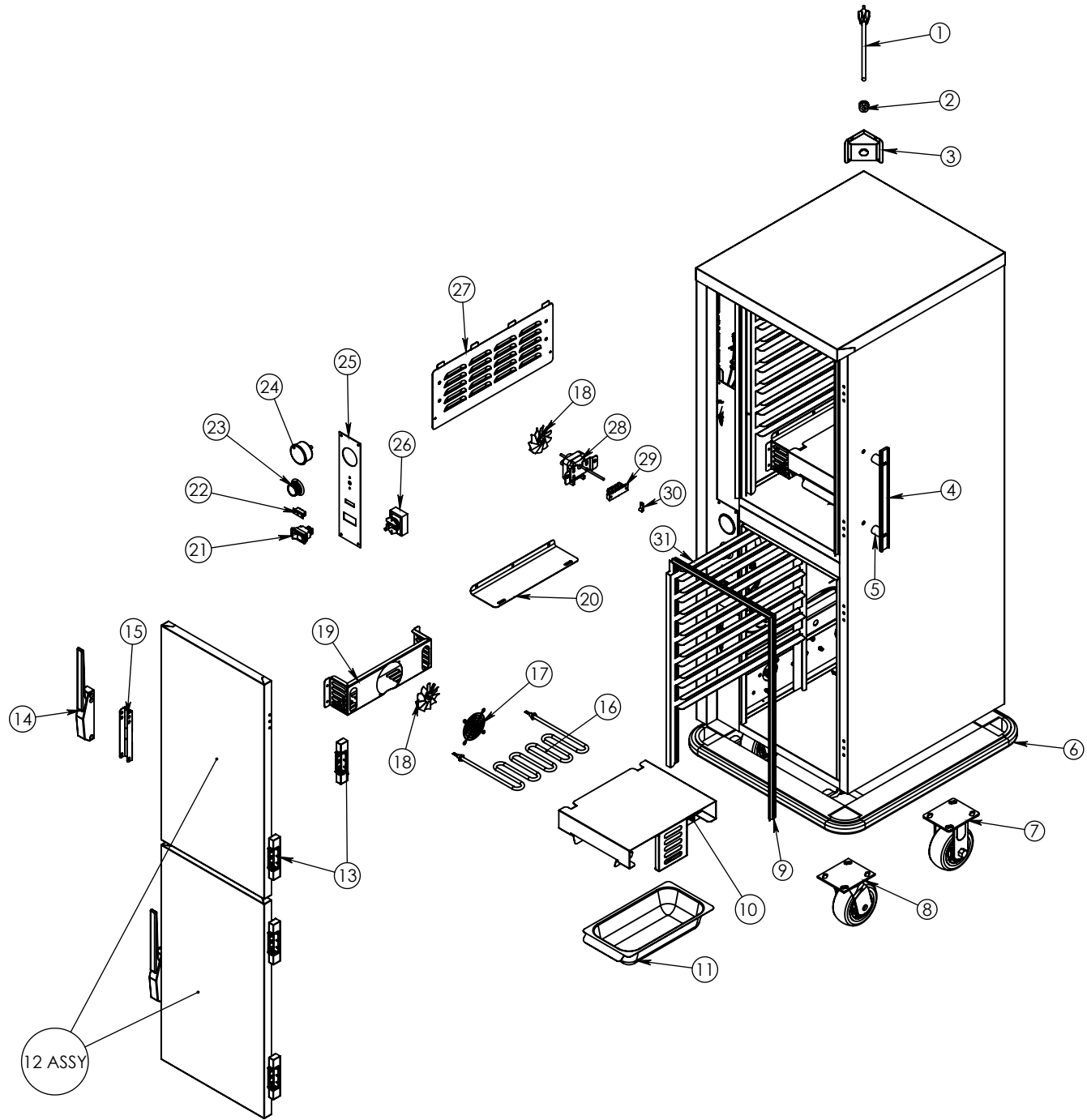
PS-1220-6-6

Pg.1 . TITLE PAGE

Pg.3 .PS-1220-6-6 BOM

Pg.2 . PS-1220-6-6





DRAWING #: **PS-1220-6-6 DRAWING**

DESCRIPTION: **PAN SERVER 2 SEP CMPRTMNT**

DRAWN BY: OH

LAST SAVED BY: ohooks

ITEM NO.	QTY.	PART NO.	DESCRIPTION
1	1	CRDSET20-115	CORD 12' 115 VOLT 5-20P 12GA 3 WIRE
2	1	BSH STRN 4	STRAIN RELIEF FOR 20 AMP CORD
3	1	69730	HUMI TRI-CORD BRCKET DD .770X .875
4	2	HDL-125-AL	HANDLE PUSH ALUMINUM 12.5" LONG
5	4	SPCR125X.330	HANDLE SPACERS FOR HDL 21 AND 12.
6	1	Z-200-1058	PS-1220-6-6 15 BUMPER ASSEMBLY
7	2	CSTR 52-R-PPF	CASTER 5" RIGID EZ ROLL POLY
8	2	CSTR 52-SB-PPF	CASTER 5" SWIVEL BRAKE EZ ROLL POLY
9	2	GSKT-D-25-500X14-600	SILICONE DR GSKT D 25.5X14.6 3S
10	1	67068	HUMITEMP TUNNEL 10.25
11	1	WATER-PAN-3RD-WHDL	WATER PAN 2.5" X6.75 X
12	2	Z-301-5701 (INCLUDES 13-15)	PS-1220-6-6 DOOR ASSY EDG/EDG RH
13	4	HNG-214	DOOR HINGE EDGEMOUNT .875"
14	2	LTH-DR	DOOR LATCH EDGEMOUNT STYLE CHROME
15	2	81004	LTH-DR LATCH COVER NSF
16	1	EL1000-120-HT	TUBULAR ELEMENT 1000W/120V HUMI
17	1	GRD FAN	FAN GUARD
18	2	BLD FAN AL	FAN BLADE 3" ALUMINUM
19	2	4011	HUMITEMP BLOWER HOUSING
20	2	4041	HUMITEMP BLOWER LID
21	2	SWH RCK E1	SWITCH NON-LT ROCKER 125/250V 20AMP
22	2	LT PLT A-G	INDICATOR LIGHT AMBER GREEN 125V
23	2	KNB H6	KNOB WITH ARROW
24	2	T-METER H1	THERMOMETER 100-220
25	2	CNTRL-PNL-HUMI-TEMP-AL	ALUM PANEL FOR HUMI-TEMP
26	2	T-STAT H1	THERMOMSTAT HEAT CONTRL 90-190 36"
27	2	53454	HUMITEMP LOUVER PANEL W/TABS
28	2	Z-600-6151	MTR BY120 92 SERVICE ASSY
29	3	TRM 4QC	TERMINAL BLOCK 4QC
30	2	CLP-AL3-8	CLAMP 3-8" ALUM
31	4	50928	PS-1220-6/6 RACK 2.625"



DRAWING #: PS-1220-6-6 DRAWING	
DESCRIPTION: UNIVERSAL SERVER	
DRAWN BY: OH	LAST SAVED BY: ohooks