



Food Warming Equipment Co. Inc.
 5599 Highway 31W, Portland, TN 37148
 • 800-222-4393 •



Service Information

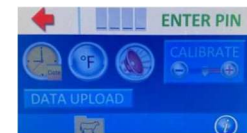
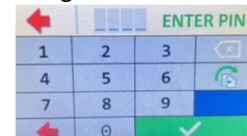
Date: 5-26-26	Number: SI-ARB04
Subject: INSTRUCTIONS REPLACING CONTROL PANEL ON LCHR UNITS. Z-500-1057	

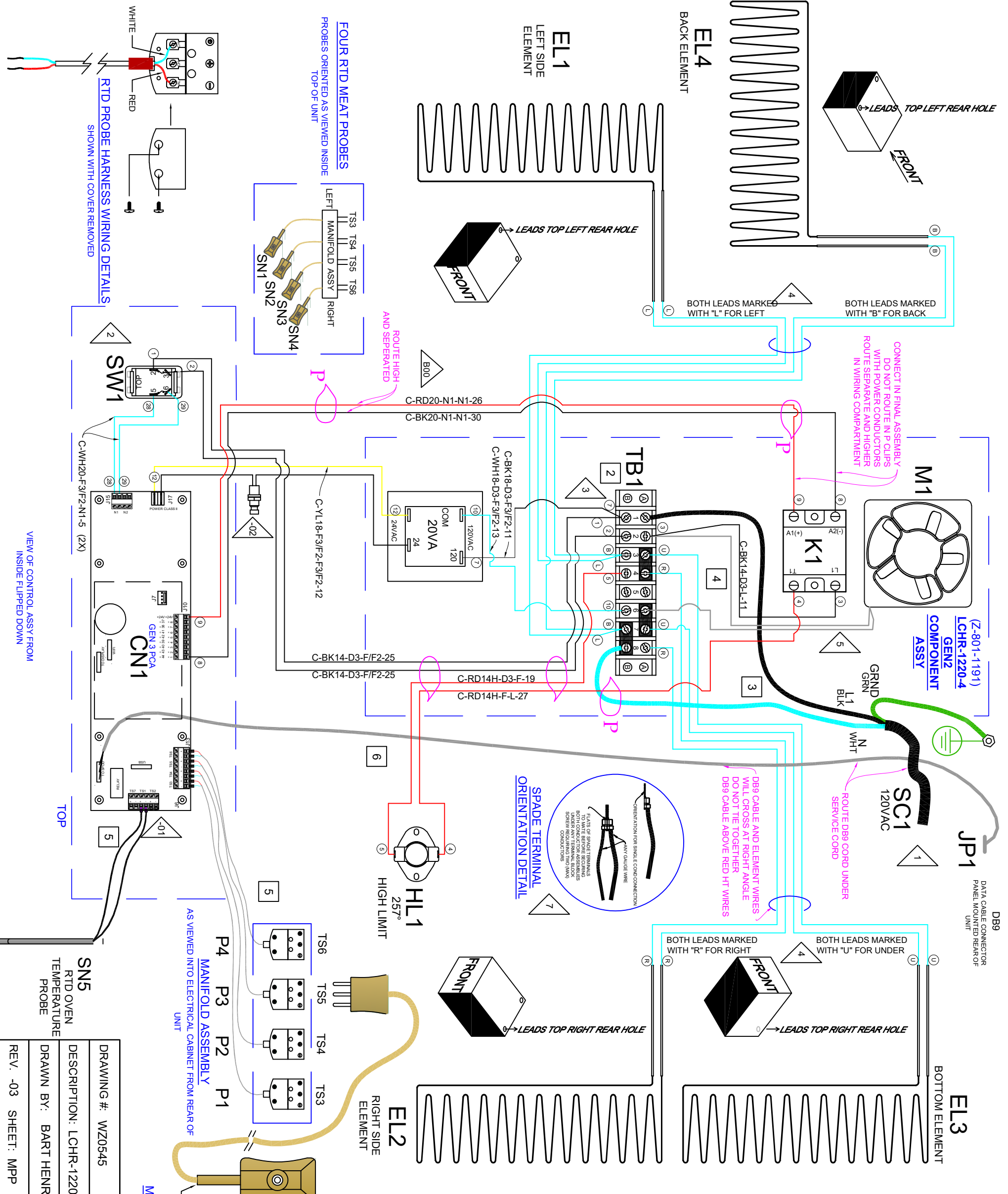
Purpose: How to replace the control board.

Parts Included: 1- CNTRL BRD-TS LCH 4.3 G3

Installation Instructions:

- 1) Unplug the unit from the power source.
- 2) Remove the top from the unit.
- 3) Place new control board next to current control board installed in the unit.
- 4) Transfer wires from current control board to new control board one at a time taking notes of location.
- 5) Once all wires are transferred remove the old control board from the unit.
- 6) Install new control board on mounting studs and fasten with nuts removed in previous step.
 - a. Be careful not to overtighten nuts as damage could occur to control board.
- 7) Check all wires are secured and control board is mounted correctly.
- 8) Check that all tools and debris are removed from the electrical compartment.
- 9) Place top back on the unit and plug in.
- 10) Power the control board on.
- 11) Once activation is completed and screen shows DAYPART and OVERNIGHT proceed to the next step.
 - a. If activation fails, please call FWE at 800-222-4393 option 3 for troubleshooting.
- 12) Press the gears  icon in the bottom righthand corner of the screen.
- 13) Enter 5599 and press green check box.
- 14) Enter the serial number into the unit and press the check box to store it.
- 15) Enter 4393 and press green check box.
- 16) On the lefthand side of the screen press the Date icon.
- 17) Enter the correct date and time into the unit and press the check box to store it.
- 18) Press the "I"  icon in the bottom righthand corner of the screen.
- 19) Confirm the serial number, date and time are correct.
- 20) If everything is correct, let the customer know the unit is fully operational and ready for use.





NOTES

REFERENCE MUST BE MADE TO THE CUT-LIST FOR COMPLETE IDENTIFICATION OF THE CONDUCTOR ASSEMBLIES USED TO WIRE THIS UNITS.

- ⊗ CUT-LIST WIRE# MARKERS ON DRAWINGS.
- ⊗ WIRE KIT (WK) ITEM NUMBER DESIGNATION ON DRAWINGS.

1. STRAIN RELIEF CORD IN CABINET WITH SINGLE KNOT.
2. SERVICE CORD LEADS TO BE TERMINATED WITH RATED SPRING SPADE TERMINALS AND SECURED AT TB1 AS SHOWN.
3. GREEN GROUNDING CONDUCTOR OF CORD IS TO BE BONDED TO CABINET IN ACCORDANCE WITH SAFETY AGENCY STANDARDS.
4. DISCONNECT TERMINALS TO SWITCH ARE NOT TO BE CONNECTED TO SWITCH UNTIL AFTER OVERLAY IS INSTALLED ON UNIT IN NEXT ASSEMBLY.
5. TERMINAL BLOCK TB1 TO CONTAIN THREE JUMPERS FROM:
 - (1) POSITION 3A TO 4A
 - (2) POSITION 6A TO 7A
 - (3) POSITION 7B TO 8B
6. ELEMENTS EL1-EL4 SHOULD BE PURCHASED WITH PIDG SPRING SPADE TERMINAL (TE #52930) OR SHALL BE TERMINATED WITH TYPE C2 TRM SPD 22-16-8.
7. COOLING FAN M1 SHALL BE TERMINATED WITH TYPE C2 TRM SPD 22-16-8 SPRING SPADE TERMINALS.
8. 0-100-GNTR-BREARBOARD JUMPERS SHALL BE SECURED BY R-POSITION SCREW-ON CONNECTORS TS1-AND TS3 THRU TS6 PRIOR TO PLACING OTHER GONDUCTORS-IN-CONNECTORS.
9. FLATS OF SPADE TERMINALS SHALL MATE WHEN SECURING TWO TERMINALS UNDER ANY SCREW OF TB-1.

CONTROLER RELATED LOW VOLTAGE CONDUCTORS ARE TO BE ROUTED IN SEPARATE PATH FROM POWER CONDUCTORS AND ADEQUATE DISTANCE IS TO BE MAINTAINED BETWEEN THE TWO. IF THEY MUST CROSS THEY WILL CROSS AT A RIGHT ANGLE TO EACH OTHER. CABLES ARE TO BE ORDERLY BOUND AND STRAIN-RELIEFED AGAINST PULLING BY NYLON WIRE TIES AFTER CONNECTIONS ARE MADE.

APPROXIMATE LOCATION OF STUD SECURED 'P' CLIPS TO CONTAIN WIRES IN PROPER ROUTE PATH OR (NO "P") NYLON TIES.

DRAWING #:	WZ0545
DESCRIPTION:	LCHR-1220-4 120V 1P VAST GEN3
DRAWN BY:	BART HENRY
REV. -03	SHEET: MPP



5599 Highway 31 West TEL: (615)325-2774
Portland, TN 37148 FAX: (615)528-0480