



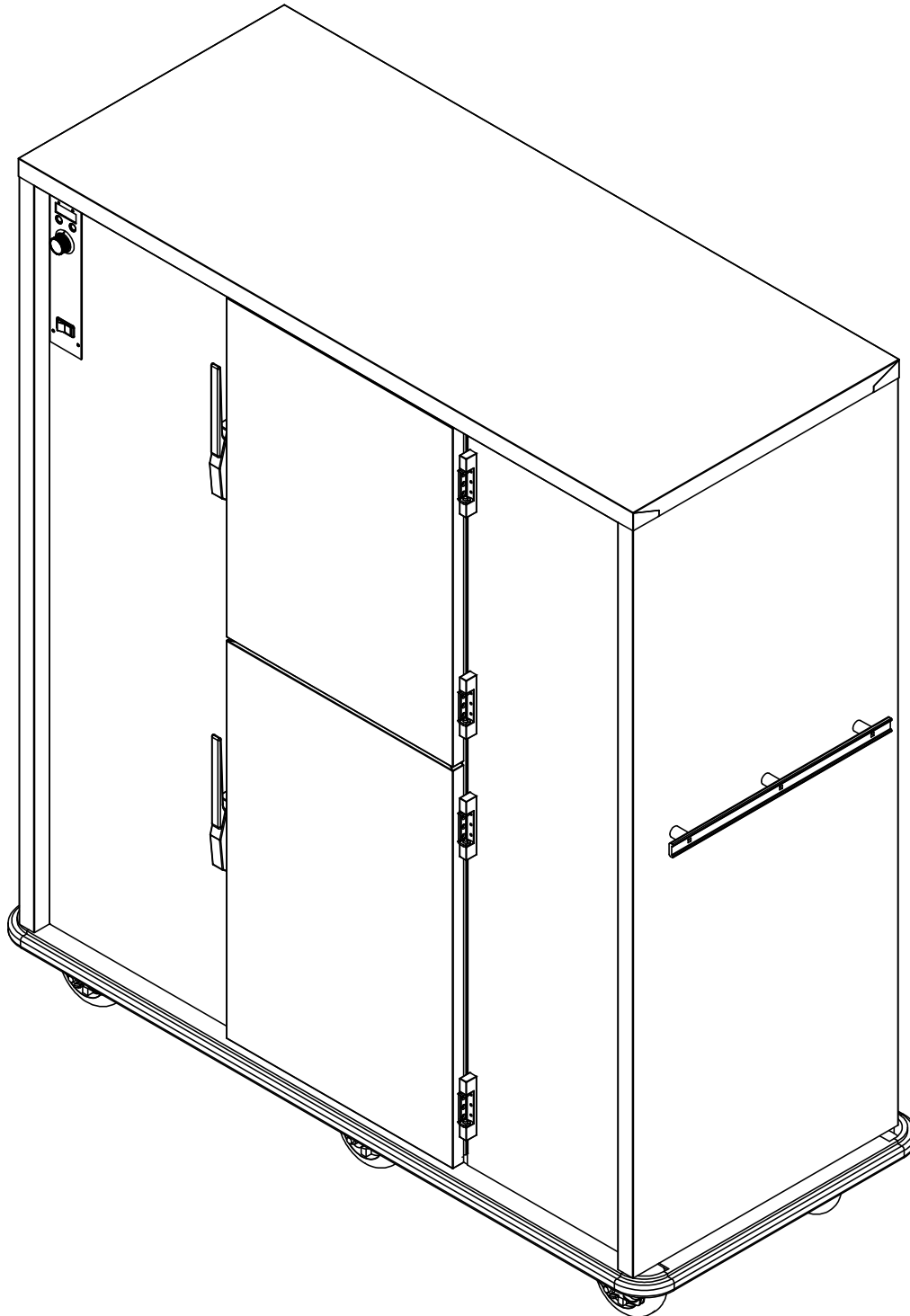
5599 Highway 31 West  
Portland, TN 37148  
(800) 222-4393

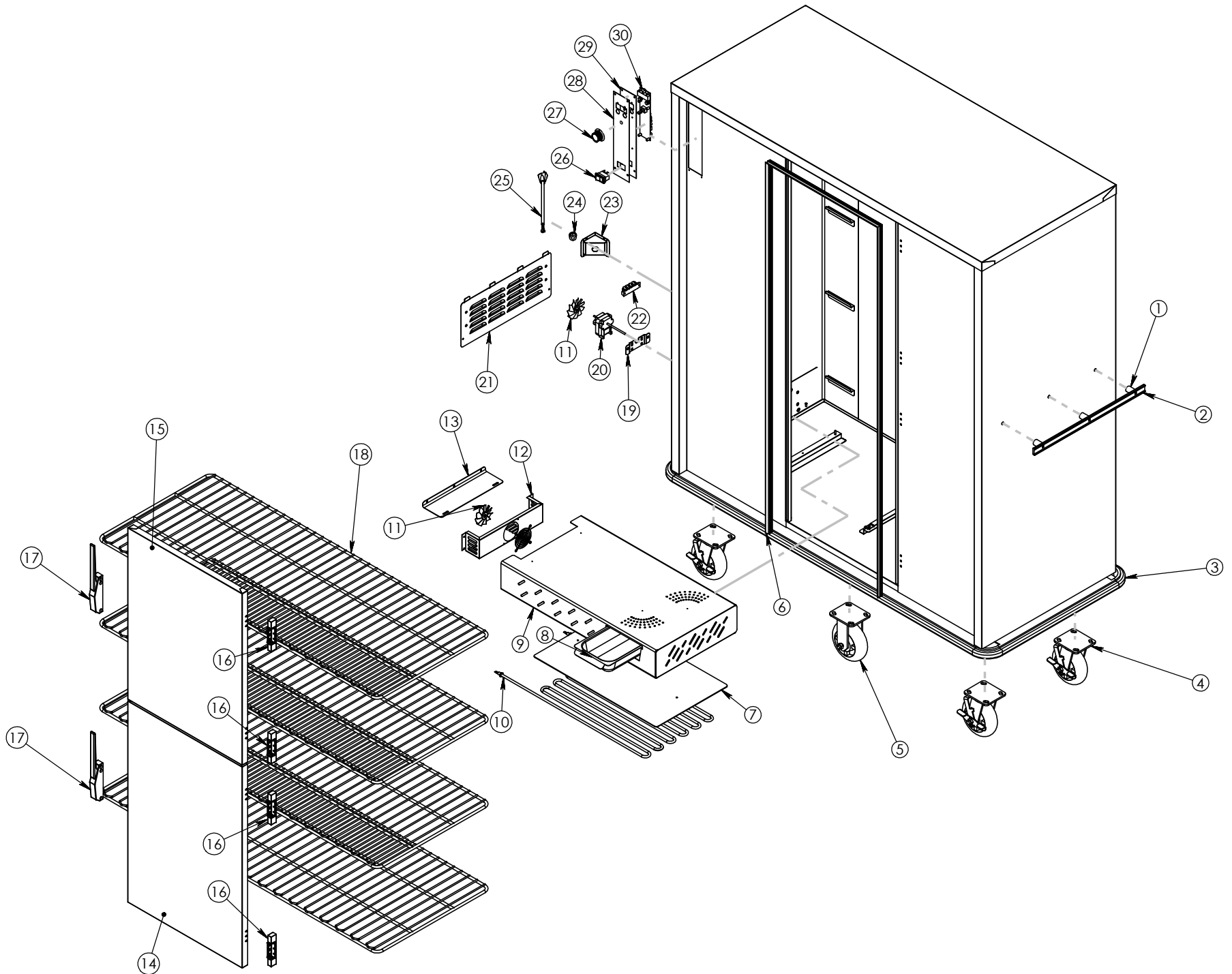
# P-200

Pg.1 . TITLE PAGE

Pg.3 . P-200 BOM

Pg.2 . P-200 EXPLODED





DRAWING #: <b>P-200</b>	
DESCRIPTION: <b>ASSEMBLY</b>	
DRAWN BY: DP	LAST SAVED BY: dplodzien

ITEM NO.	QTY.	PART NO.	DESCRIPTION
1	6	SPCR125X.330	SPACER PUSH HDL 1.25X5/16
2	2	HDL-215-AL	HANDLE PUSH AL 21.5
3	1	Z-200-1049	BUMPER
4	4	CSTR 6 SB-5	CASTER 6" SWIVEL CARTWASH CASTER
5	2	CSTR 6 R-5	SUPER DUTY CASTER 6" RIGID POLY/RUB
6	1	GSKT-D-62-500X21-875	SILICONE DR GASKET D 62.500X21.875
7	1	50300	ALUM HTNG ELEMENT CVR
8	1	WATER-PAN-3RD-WHDL	WATER PAN 2.5" X6.75 X
9	1	5954	WATER PAN TUNNEL
10	1	EL2000-120HT-XL-28	TUBULAR HEAT ELEMENT 2000W 120V, XL
11	2	BLD FAN AL	BLADE FAN AL 3IN 1875-0
12	1	5345	HUMITEMP BLOWER HSING (P200)
13	1	4041	HUMITEMP BLOWER LID
14	1	Z-301-4001 (INCLUDES 16,17)	P-200 DOOR ASSY BTM EDG/EDG RH
15	1	Z-301-4000 (INCLUDES 16,17)	P-200 DR TOP EDG/EDG RH SWEEP
16	4	HNG-214	DOOR HINGE EDGEMOUNT .875"
17	1	LTH-DR	DOOR LATCH EDGEMOUNT STYLE CHROME
18	4	SHLF-P200	SHELF 22.25x54.75"
19	1	80610	BRACKET MOTOR MNT FOR BAY MTR
20	1	MTR JK120 92	MOTOR, 115V
21	1	53454	HUMITEMP LOUVER PANEL W/TABS
22	1	TRM 4QC	TERMINAL BLOCK 4QC
23	1	69730	HUMI TRI-CORD BRCKET DD .770X .875
24	1	BSH STRN 4	STRAIN RELIEF FOR 20 AMP CORD
25	1	CRDSET20-115	CORD 12' 115 VOLT 5-20P 12GA 3 WIRE
26	1	SWH RCK HY60	SWITCH NON-LT ON/OFF ROCKER BLK
27	1	KNB H6	KNOB WITH ARROW
28	1	CNTRL PNL T-STAT V-G	OVERLAY, HUMI-TEMP IEC VERTICAL
29	1	68432	ELECTRONIC T-STAT HY60 SWITCH
30	1	T-STAT ELE 2	ELEC THERMO HEAT CNTRL VERTICAL IEC

DRAWING #: **P-200**

DESCRIPTION: **ASSEMBLY**

DRAWN BY: DP

LAST SAVED BY: dplodzien